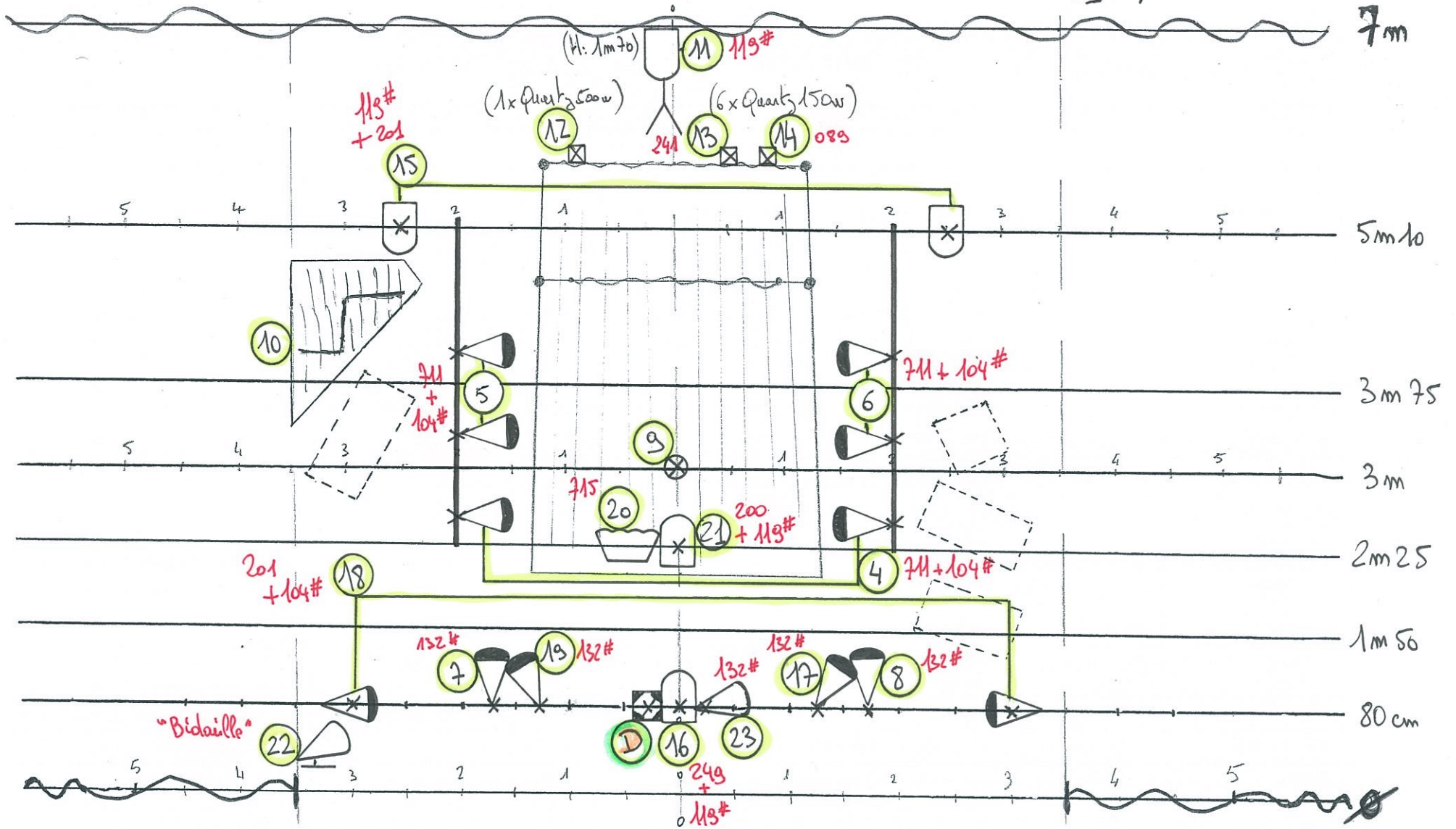
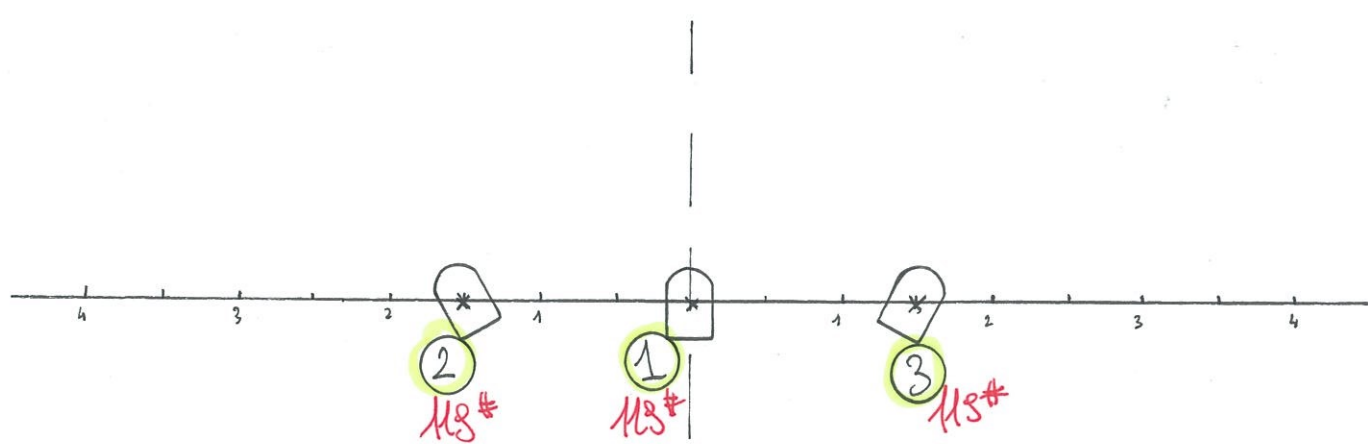


HUCK FINN (H: 5m50)

éch.: 1/50^m





ech:
1/50m

- ◁ 12 x PAR64 en CP62
- □ 8 x RC 1Kw
- ▷ 2 x PAR64 en CP60
- ◡ 1 x Hoiziodes asymétrique
- √ 1 x Pied (Hauteur focale 1m70)
- ⊥ 1 x Plafond de sol
- ⊙ 1 x Direct

Fourni par la Cie.:

- ⊗ Lampe suspendue
- ◻ Bonnette de lecture (Direct)
- ⊠ Quartz (150w & 500w)